



GOOD TO DRILL



DESIGNED TO PERFORM



BUILT TO ENDURE



GOOD TO DRILL



Water Well Rigs
Blast Hole Rigs

Exploration Rigs
Drilling Accessories



Our Story and the Success

In 1992, PRD Rigs manufactured its first Hydraulic Rig. This was just the beginning of a long-lasting success story in the drilling rigs manufacturing industry. Innovation and strategy are our mantras. We strive to constantly learn, evolve and re-invent quality drilling rigs. We have substantially catered to the domestic market by providing nearly 2000 rig units since inception. Our commitment towards quality drilling rigs kept the ball moving further down the field and we penetrated the global arena in 1999. Consistent quality has been the key in sustaining our global presence. As a testimony to excellence, we are the first drilling rig manufacturing company with an ISO certification (9001:2015).

Diverse product range is another accomplishment of PRD Rigs. Drilling equipment for water wells, mining, exploration, construction and special purpose rigs form the PRD Rigs spectrum. Our R & D team keeps the innovation wheel rolling to provide economical but robust drilling rigs. Also, we recognize the need for providing adaptable solutions that suit specific regional needs. Therefore, we tailor-make drilling rigs to have every need covered.

45+
years of
legacy

1000+
units sold
across the
world

60+
countries

500+
trained
employees

Our Presence

We operate internationally with offices in Kenya, Tanzania, Cameroon, Nigeria, Ghana, Burkina Faso, Mali, Sierra Leone, Guinea and Sri Lanka. Our dealership network involves several locations around the globe spanning Asia, Africa, South America and Australia.



PRD Max Drill 4000

| | |
|---------------------|---|
| Application | De-watering & monitoring holes, Cathodic protection |
| Drilling method | DTH & Rotary Drilling |
| Hole diameter range | 165 - 508 mm (6 ½" - 20") |
| Maximum depth | 1350 m @ 165 mm (6 ½") |
| Pull up force | 42200 kgf |
| Pull down force | 18500 kgf |
| Rotary head | 13700 Nm, 0 - 120 rpm 1500 cfm - 400 psi |
| Air compressor | 1350 cfm - 365 psi / 425 psi 1200 cfm - 330 psi |
| Mud pump | 10" x 7" Engine driven duplex double acting mud pump |



PRD OZ Drill

| | |
|---------------------|--|
| Application | Cathodic protection De-watering & monitoring holes, Irrigation |
| Drilling method | DTH & Rotary Drilling |
| Hole diameter range | 165 mm - 508 mm (6 ½" - 20") |
| Maximum depth | 750 m @ 165 mm (6 ½") |
| Pull up force | 25800 kgf |
| Pull down force | 17700 kgf |
| Rotary head | 9000 Nm, 0 - 100 rpm 1500 cfm - 400 psi |
| Air compressor | 1350 cfm - 365 psi / 425 psi 1200 cfm - 330 psi |
| Mud pump | 8" x 6" Hydraulic driven duplex double acting mud pump / 10" x 7" Engine driven duplex double acting mud pump |

PRD Max Drill 3000

| | |
|---------------------|---|
| Application | De-watering & monitoring holes, Cathodic protection |
| Drilling method | DTH & Rotary Drilling |
| Hole diameter range | 165 mm - 508 mm (6 ½" - 20") |
| Maximum depth | 1000 m @ 165 mm (6 ½") |
| Pull up force | 32300 kgf |
| Pull down force | 21800 kgf |
| Rotary head | 9500 Nm, 0 - 100 rpm 1500 cfm - 400 psi |
| Air compressor | 1350 cfm - 365 psi / 425 psi 1200 cfm - 330 psi |
| Mud pump | 10" x 7" Engine driven duplex double acting mud pump |



PRD Max Drill

| | |
|---------------------|---|
| Application | Domestic Water wells, Monitoring holes, Irrigation |
| Drilling method | DTH & Rotary Drilling |
| Hole diameter range | 165 - 356 mm (6 ½" - 14") |
| Maximum depth | 600 m @ 165 mm (6 ½") |
| Pull up force | 18000 kgf |
| Pull down force | 11800 kgf |
| Rotary head | 6545 Nm, 0 - 100 rpm |
| Air compressor | 1100 cfm - 300 psi 1200 cfm - 330 psi |
| Mud pump | 6" x 6" / 8" x 6" Hydraulic driven duplex double acting mud pump |



PRD Speed Star

| | |
|---------------------|---|
| Application | Domestic Water wells |
| Drilling method | DTH & Rotary Drilling |
| Hole diameter range | 165 - 305 mm (6 ½" - 12") |
| Maximum depth | 363 m @ 165 mm (6 ½") |
| Pull up force | 10000 kgf |
| Pull down force | 7300 kgf |
| Rotary head | 4020 Nm, 0 - 100 rpm |
| Air compressor | 1100 cfm - 300 psi 1200 cfm - 330 psi |
| Mud pump | 6" x 6" Hydraulic driven duplex double acting mud pump |



PRD 650

| | |
|---------------------|---|
| Application | Domestic Water wells |
| Drilling method | DTH & Rotary Drilling |
| Hole diameter range | 165 - 254 mm (6 ½" - 10") |
| Maximum depth | 250 m @ 165 mm (6 ½") |
| Pull up force | 7800 kgf |
| Pull down force | 5300 kgf |
| Rotary head | 3000 Nm, 0 - 80 rpm |
| Air compressor | 1100 cfm - 300 psi 600 cfm - 200 psi |
| Mud pump | 5" x 4 ½" Hydraulic driven duplex double acting mud pump |



PRD 600

| | |
|---------------------|---|
| Application | Domestic Water wells |
| Drilling method | DTH & Rotary Drilling |
| Hole diameter range | 165 - 203 mm (6 ½" - 8") |
| Maximum depth | 180 m @ 165 mm (6 ½") |
| Pull up force | 5100 kgf |
| Pull down force | 3100 kgf |
| Rotary head | 2100 Nm, 0 - 80 rpm |
| Air compressor | 600 cfm - 200 psi 540 cfm - 185 psi |
| Mud pump | Engine / Hydraulic driven Centrifugal Mud Pump |



PRD 500 T

| | |
|---------------------|---|
| Application | Domestic Water wells |
| Drilling method | DTH & Rotary Drilling |
| Hole diameter range | 114 - 152 mm (4 ½" - 6") |
| Maximum depth | 150 m @ 114 mm (4 ½") |
| Pull up force | 5100 kgf |
| Pull down force | 3100 kgf |
| Rotary head | 2100 Nm, 0 - 80 rpm |
| Air compressor | 600 cfm - 200 psi |
| Mud pump | Engine / Hydraulic driven Centrifugal Mud Pump |



PRD 450 Portable Drill

| | |
|---------------------|---|
| Application | Domestic Water wells |
| Drilling method | DTH / Rotary Drilling |
| Hole diameter range | 102 - 152 mm (4" - 6") |
| Maximum depth | 150 m @ 102 mm (4") |
| Pull up force | 2700 kgf |
| Pull down force | 1600 kgf |
| Air compressor | 400 cfm - 175 psi |
| Mud pump | Engine / Hydraulic driven Centrifugal Mud Pump |



Hydraulic

| | |
|-------------|------------------------------------|
| Rotary head | 1500 Nm, 0 - 25 rpm |
| Prime Mover | Engine driven Hydraulic power pack |

Pneumatic

| | |
|-------------|----------------------------------|
| Rotary head | 1100 Nm, 0 - 70 rpm |
| Prime Mover | Air compressor 400 cfm - 150 psi |

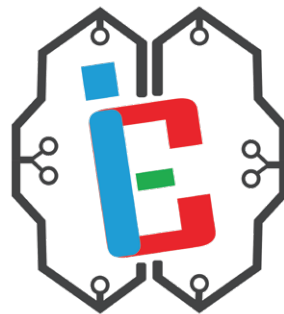


PRD DR 2000

| | |
|---------------------|---|
| Application | Domestic Water wells |
| Drilling method | Direct Rotary Drilling |
| Hole diameter range | 152 - 444 mm (6" - 17 1/2") |
| Maximum depth | 650 m @ 165 mm (6 1/2") |
| Rotary head | 9000 Nm, 0 - 100 rpm |
| Hoisting capacity | 40000 kg |
| Mast length | 12 m length to handle 9 m |
| Mud pump | 10" x 7" Engine driven Duplex double acting Mud Pump |

PRD Autoloader

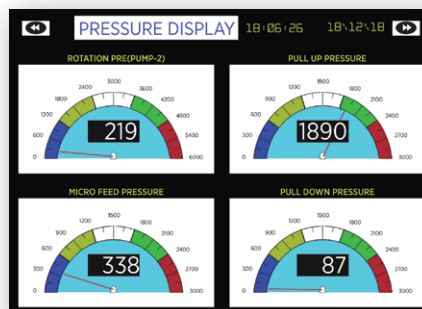
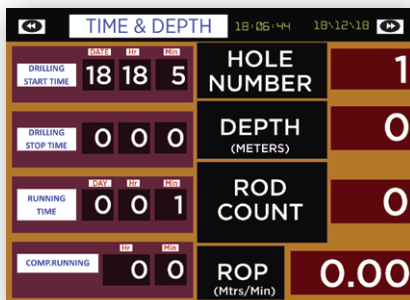
| | |
|-----------------|---|
| Application | Domestic Water wells |
| Drilling method | DTH & Rotary Drilling |
| Hole diameter | 165 - 356 mm (6 ½" - 14") |
| Maximum depth | 450 m @ 165 mm (6 ½") |
| Pull up force | 14100 kgf |
| Pull down force | 8600 kgf |
| Rotary head | 4500 Nm, 0 - 100 rpm |
| Air compressor | 1100 cfm - 300 psi 1200 cfm - 330 psi |
| Mud pump | 6"x 6" Hydraulic driven Mud Pump Hydraulic driven Centrifugal Mud Pump |
| Rod handling | Auto rod handling unit to hold 40 no's of 5 m drill pipe on board |



Intelligent Control Efficiency

PRD ICE Package

- Real time fuel monitoring
- Drilling progress monitoring
- Drill efficiency indicator
- Bit load sensing system
- GPS location monitoring system
- Power breakout system
- Digital display in control panel
- Centralised hydraulic test station
- Real time hydraulic system status
- Remote access through mobile app
- Fire extinguisher and hose reel
- Adaptable for all Water well rig models



PRD Core 300

| | |
|-----------------|--|
| Application | Surface Exploration |
| Drill rod size | PQ / HQ / NQ |
| Maximum depth | PQ-50 m; HQ-150 m; NQ-300 m |
| Prime mover | 52 hp |
| Rotary head | Torque : 565 - 4000 Nm Speed : 125 - 1000 rpm |
| Rod handling | 3 m rod handling with rod retrieval of 6 m |
| Pull up force | 6300 kgf |
| Pull down force | 3700 kgf |
| Drilling angle | 45° - 90° |
| Main winch | 3 ton |
| Wireline winch | 0.5 ton with 350 m rope |
| Water pump | Displacement of 35 lpm with 50 bar pressure |
| Mounting option | Crawler / Truck / Skid |



PRD Silver Core

| | |
|-----------------|--|
| Application | Surface Exploration |
| Drill rod size | PQ / HQ / NQ |
| Maximum depth | PQ-550 m; HQ-750 m; NQ-1250 m |
| Prime mover | 260 hp |
| Rotary head | Torque : 688 - 4561 Nm Speed : 163 - 1083 rpm |
| Rod handling | 3 m rod handling with rod retrieval of 6 m |
| Pull up force | 13700 kgf |
| Pull down force | 7000 kgf |
| Drilling angle | 45° - 90° |
| Main winch | 10 ton |
| Wireline winch | 2 ton with 1200 m rope |
| Water pump | Displacement of 205 lpm with 69 bar pressure |
| Mounting option | Crawler / Truck |



PRD Core 750

| | |
|-----------------|--|
| Application | Surface Exploration |
| Drill rod size | PQ / HQ / NQ |
| Maximum depth | PQ-150 m; HQ-450 m; NQ-750 m |
| Prime mover | 215 hp |
| Rotary head | Torque : 1210 - 5440 Nm Speed : 155 - 700 rpm |
| Rod handling | 3 m rod handling with rod retrieval of 6 m |
| Pull up force | 12400 kgf |
| Pull down force | 6300 kgf |
| Drilling angle | 45° - 90° |
| Main winch | 10 ton |
| Wireline winch | 2 ton with 800 m rope |
| Water pump | Displacement of 140 lpm with 69 bar pressure |
| Mounting option | Crawler / Truck |



PRD GOLD RC Drill Rig

| | |
|---------------------|----------------------------|
| Application | Surface Exploration |
| Drilling method | DTH - Reverse Circulation |
| Hole diameter range | 114 - 140 mm (4 ½" - 5 ½") |
| Maximum depth | 200 m |
| Pull up force | 10800 kgf |
| Pull down force | 7300 kgf |
| Rotary head | 4000 Nm, 0 - 100 rpm |
| Air compressor | 1200 cfm - 300 psi |
| Drilling angle | 45° - 90° |
| Mounting option | Truck / Crawler |
| Optional attachment | Fixed cone splitter |



PRD OZ RC Drill Rig

| | |
|---------------------|--|
| Application | Surface Exploration |
| Drilling method | DTH - Reverse Circulation |
| Hole diameter range | 114 - 140 mm (4 ½" - 5 ½") |
| Maximum depth | 400 m |
| Pull up force | 25800 kgf |
| Pull down force | 17700 kgf |
| Rotary head | 9400 Nm, 0 - 100 rpm |
| Air compressor | 1500 cfm - 400 psi 1350 cfm - 425 psi |
| Drilling angle | 45° - 90° |
| Mounting option | Truck / Crawler |
| Optional attachment | Fixed cone splitter |



PRD Multi Star

| | |
|---------------------|---|
| Application | Surface Exploration |
| Drilling method | DTH - Reverse Circulation |
| Maximum depth | DTH-750 m; NQ-750 m; RC-400 m |
| Pull up force | 25800 kgf |
| Pull down force | 17700 kgf |
| Rotary head | 9400 Nm, 0-100 rpm |
| Drilling angle | 45° - 90° |
| Air compressor | 1500 cfm - 400 psi 1350 cfm - 425 psi |
| Main winch | 10 ton |
| Wireline winch | 2 ton with 800 m rope |
| Water pump | Displacement of 140 lpm with 69 bar pressure |
| Mounting option | Truck / Crawler |
| Optional attachment | Fixed cone splitter |



PRD Drill Max HC 500

| | |
|---------------------------|--|
| Application | Drilling for blasting in quarries, Dimension stone industry |
| Drilling method | DTH |
| Hole diameter | 89 - 127 mm (3 1/2" - 5") |
| Maximum depth | 15 m |
| Pull down / Pull up force | 1500 kgf |
| Single pass depth | 3 m |
| Boom Reach | 2100 mm |
| Air compressor | 380 cfm - 200 psi 400 cfm - 175 psi |
| Estimated weight | 4750 kg |
| Rotary head | 1800 Nm, 0 - 50 rpm |
| Tramming speed | 2.5 km / hr |
| Optional attachment | Dust collector |



PRD BH 30 160

| | |
|-------------------|--------------------------------|
| Application | Drilling for blasting in mines |
| Drilling method | DTH / Rotary |
| Hole diameter | 165 - 203 mm (6 1/2" - 8") |
| Maximum depth | 37 m |
| Pull down force | 13800 kgf |
| Pull up force | 7000 kgf |
| Weight on bit | 14800 kgf |
| Single pass depth | 6.8 m |
| Air compressor | 900 cfm - 350 psi / 110 psi |
| Engine power | 430 hp |
| Estimated weight | 26 ton |
| Rotary head | 2700 Nm, 0 - 140 rpm |
| Rod carousel | 4 no's x 7.6 m length |
| Tramming speed | 1.5 km / hr |

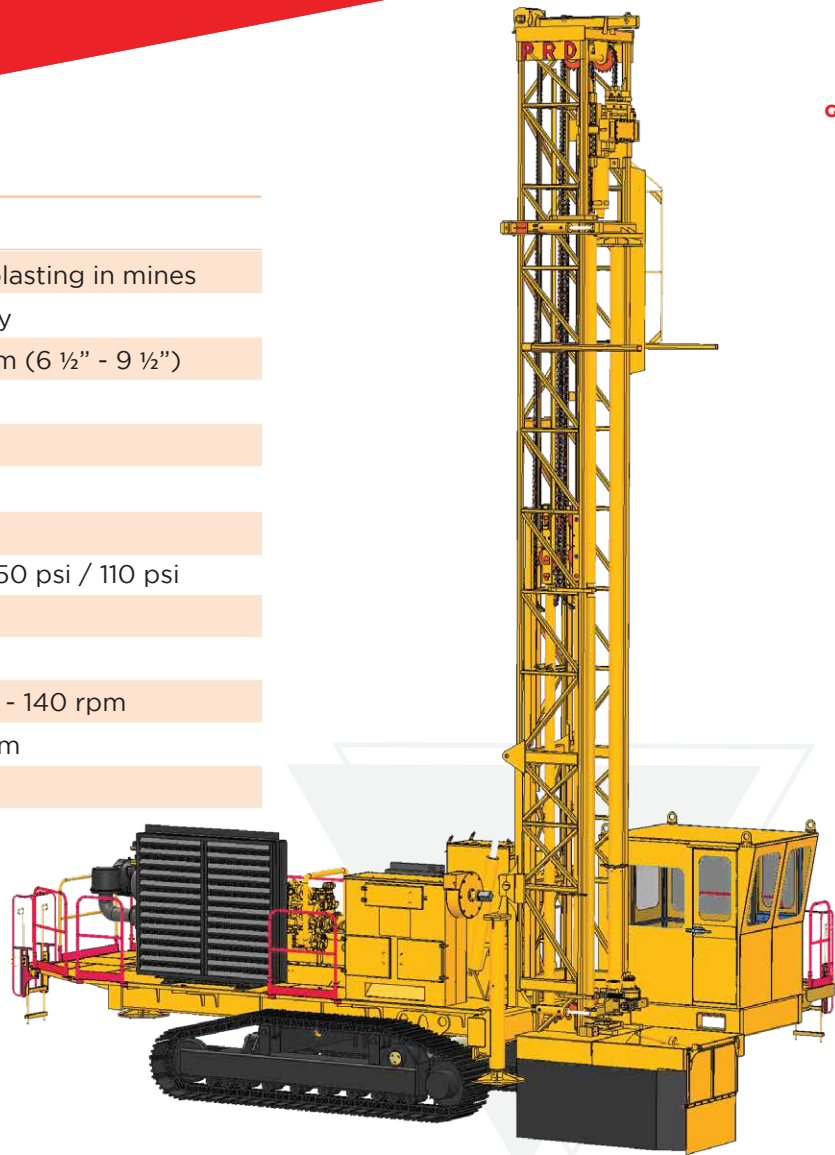
PRD BH 15 100

| | |
|---------------------------|--------------------------------|
| Application | Drilling for blasting in mines |
| Drilling method | DTH / Rotary |
| Hole diameter | 100 - 165 mm (4" - 6 1/2") |
| Maximum depth | 16 m |
| Pull down / Pull up force | 6000 kgf |
| Weight on bit | 7000 kgf |
| Single pass depth | 4 m |
| Air compressor | 600 cfm - 200 psi |
| Engine power | 260 hp |
| Estimated weight | 16 ton |
| Rotary head | 3300 Nm, 0 - 100 rpm |
| Rod carousel | 3 no's x 4 m length |
| Tramming speed | 2 km / hr |



PRD BH 45 200

| | |
|--------------------|--------------------------------|
| Application | Drilling for blasting in mines |
| Drilling method | DTH / Rotary |
| Hole diameter | 165 - 240 mm (6 ½" - 9 ½") |
| Pull down force | 22000 kgf |
| Pull up force | 10000 kgf |
| Weight on bit | 24200 kgf |
| Single pass depth | 8.4 m |
| Air compressor | 900 cfm - 350 psi / 110 psi |
| Engine power | 560 hp |
| Estimated weight | 42 ton |
| Rotary head torque | 9600 Nm, 0 - 140 rpm |
| Rod carousel | 4 no's x 8.4 m |
| Tramming speed | 1.5 km / hr |



PRD EX 65

| | |
|---------------------------|---|
| Application | Drilling for blasting in mines |
| Drilling method | DTH |
| Hole diameter | 115 - 165 mm (4 ½" - 6 ½") |
| Maximum depth | 20 m |
| Pull down / Pull up force | 2500 kgf |
| Single pass depth | 6 m |
| Air compressor | 600 cfm - 200 psi 1100 cfm - 300 psi |
| Rotary head | 2900 Nm, 0 - 100 rpm |





PRD Tractor Mounted Rig

| | |
|-------------------|---|
| Application | Domestic water wells, Piling, Solar, Exploration |
| Drilling method | DTH / Rotary / Piling |
| Drilling Capacity | Water well drilling 6 1/2" diameter upto 200 m |
| | Pile Drilling 1200 mm diameter upto 30 m (water assisted) |
| Pull up force | 7900 kgf |
| Pull down force | 5400 kgf |
| Rotary head | 4000 Nm, 0 - 80 rpm |
| Air compressor | 600 cfm - 200 psi |
| | 1100 cfm - 300 psi |
| Mud Pump | Hydraulic driven centrifugal mud pump |

PRD Pole Drill

| | |
|-----------------|---|
| Application | Concrete piling, Conductor casing in Oil & Gas, Pole erection |
| Drilling method | DTH |
| Hole Diameter | 450 mm - 1200 mm |
| Maximum depth | 15 m |
| Pull up force | 20000 kgf |
| Pull down force | 8500 kgf |
| Rotary head | 14000 Nm, 0 - 50 rpm |
| Prime mover | 260 hp |
| Air compressor | 2 x 1100 cfm - 300 psi |
| | 2 x 1200 cfm - 330 psi |



PRD Test Pumping Unit

| | |
|----------------------|-----------------------|
| Boom capacity | 15 ton |
| Max.vertical reach | 9800 mm |
| Max.horizontal reach | 1000 mm |
| Genset unit | 40 kVA - 120 kVA |
| Winch capacity | 5, 7 & 10 ton options |



PRD Giraffe Pump Installation Unit

| | |
|----------------------|---------|
| Boom capacity | 10 ton |
| Max.vertical reach | 7200 mm |
| Max.horizontal reach | 1000 mm |
| Winch capacity | 3 ton |



COMPRESSOR RANGE

| | |
|---------------------|---------------------------------|
| Free air delivery | 380 cfm - 1500 cfm |
| Pressure | 150 psi - 425 psi |
| Mounting option | Skid platform / Trolley / Truck |
| Optional attachment | Hose reel, Fuel tank |
| Make | ELGI / Atlas Copco / Doosan |



PRD Engine driven Mud pump

MUD PUMP RANGE

PRD Duplex Double Acting Piston Mud Pump

| Model | Stroke | Liner Size | Displacement (in lpm) | Max Pressure (in kg/cm ²) |
|---------|--------------|---------------|-----------------------|---------------------------------------|
| PRD 125 | 5" (127 mm) | 4 ½" (114 mm) | 435 - 665 | 18 - 10 |
| PRD 150 | 6" (152 mm) | 6" (152 mm) | 477 - 915 | 35 - 18 |
| PRD 200 | 8" (203 mm) | 6" (152 mm) | 570 - 1333 | 45 - 20 |
| PRD 250 | 10" (254 mm) | 7" (178 mm) | 782 - 1980 | 50 - 20 |

PRD Centrifugal Mud Pump

| | |
|-------------------------|---------------|
| Discharge | 600 lpm |
| Engine Power | 10 hp |
| Engine make | Yanmar |
| Delivery / Suction size | 65 mm / 75 mm |



PRD Hydraulic driven Mud pump



PRD Centrifugal Mud pump

Drilling Tools & Accessories



DTH Hammer & Bits



Tricone Bits



Drag Bits / Clay Bits



Drill Rod



Core drilling Accessories

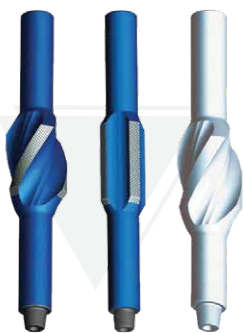


Drilling Fluids



Geo physical survey instruments

Special Accessories

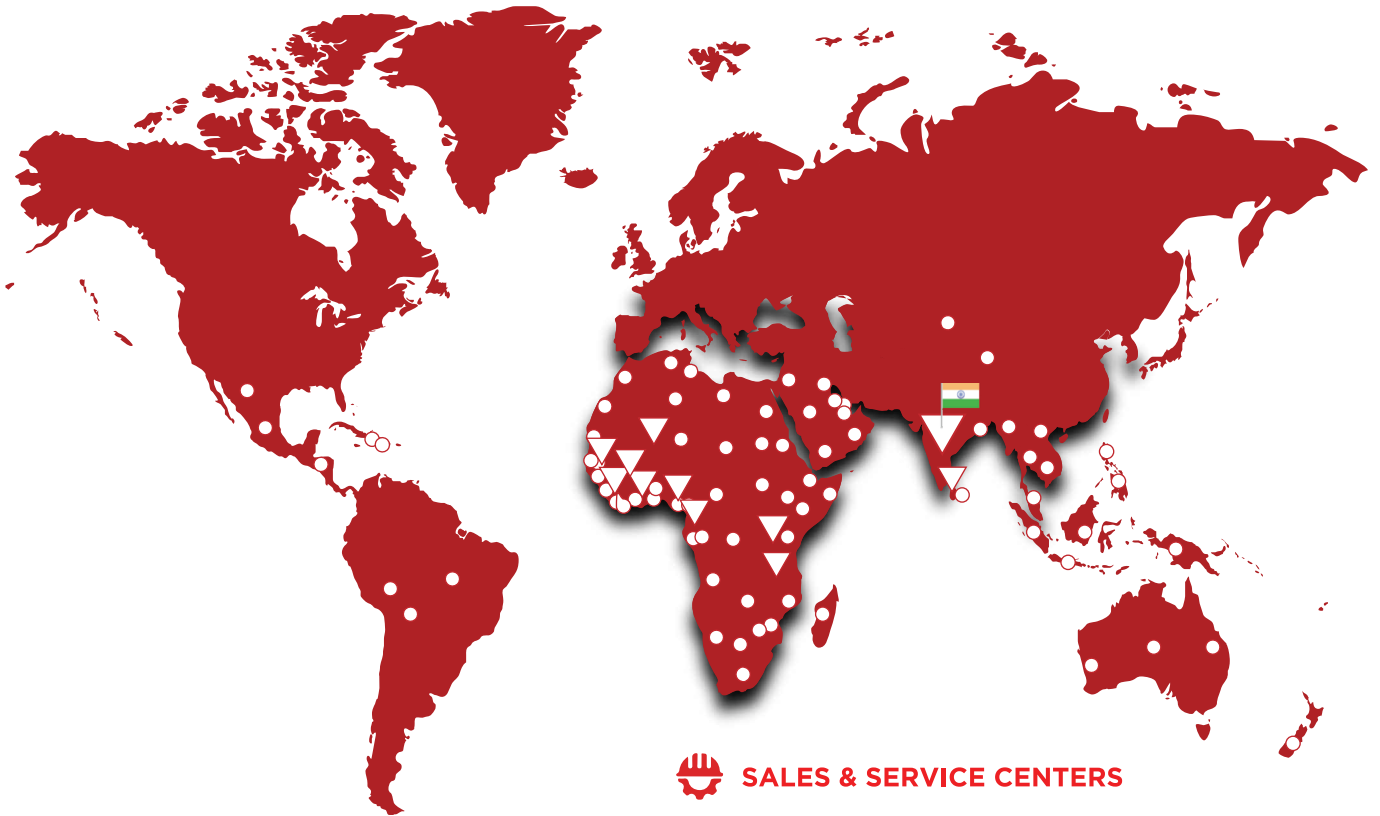


PARANTHAMAN EXPORTERS
GOOD TO DRILL

Service, Support & Satisfaction



GOOD TO DRILL



SALES & SERVICE CENTERS



MANUFACTURING



GLOBAL PRESENCE

Kenya

Tanzania

Cameroon

Nigeria

Ghana

Burkina Faso

Mali

Sierra Leone

Guinea

Sri Lanka



PARANTHAMAN EXPORTERS

GOOD TO DRILL



Plot No. M8, SIPCOT SEZ for Engineering Products, Perundurai - 638 052, Tamil Nadu. India.

+ 91-97866 88799

+ 91-4294 234482

marketing@prdrigs.com

www.prdrigs.com